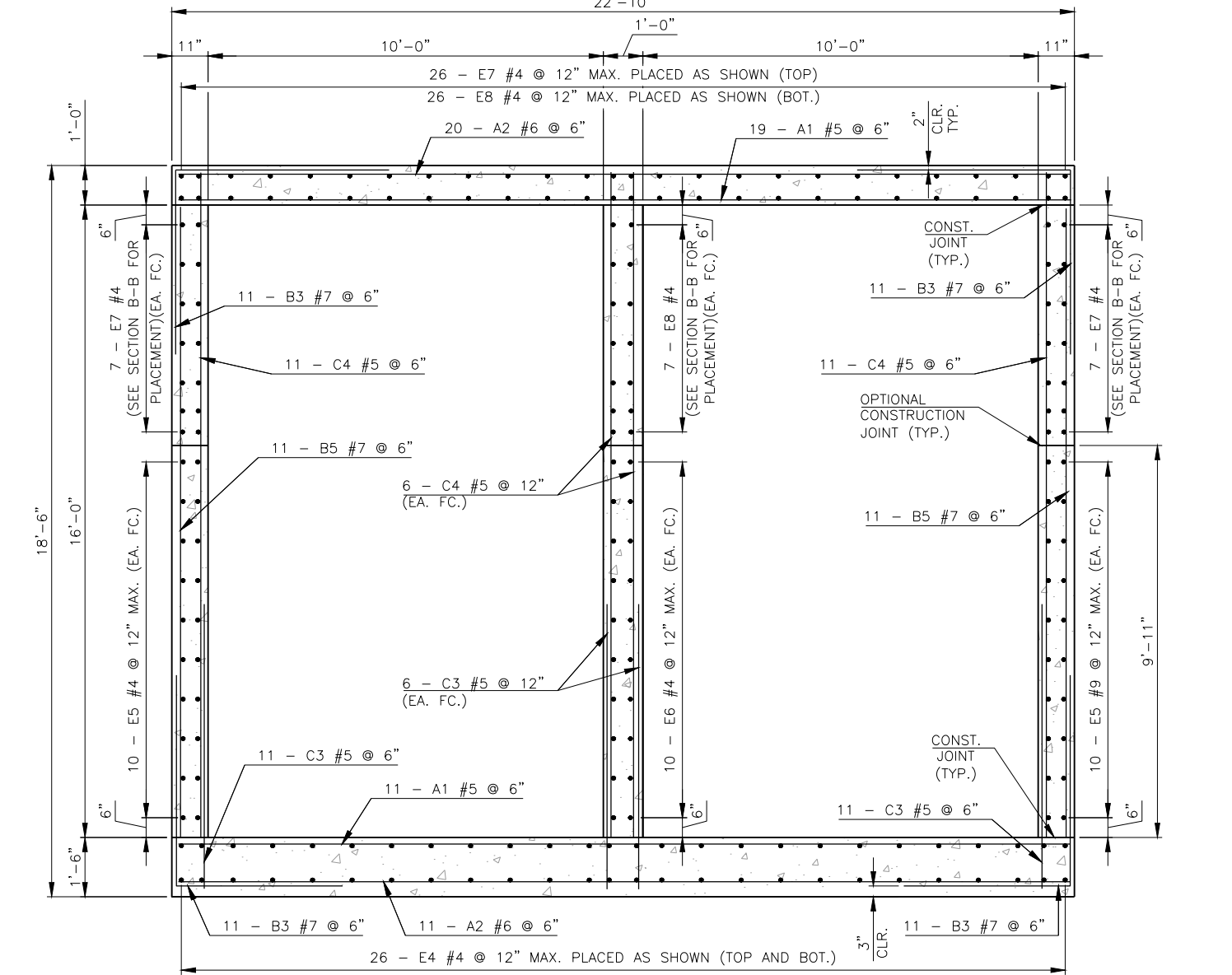
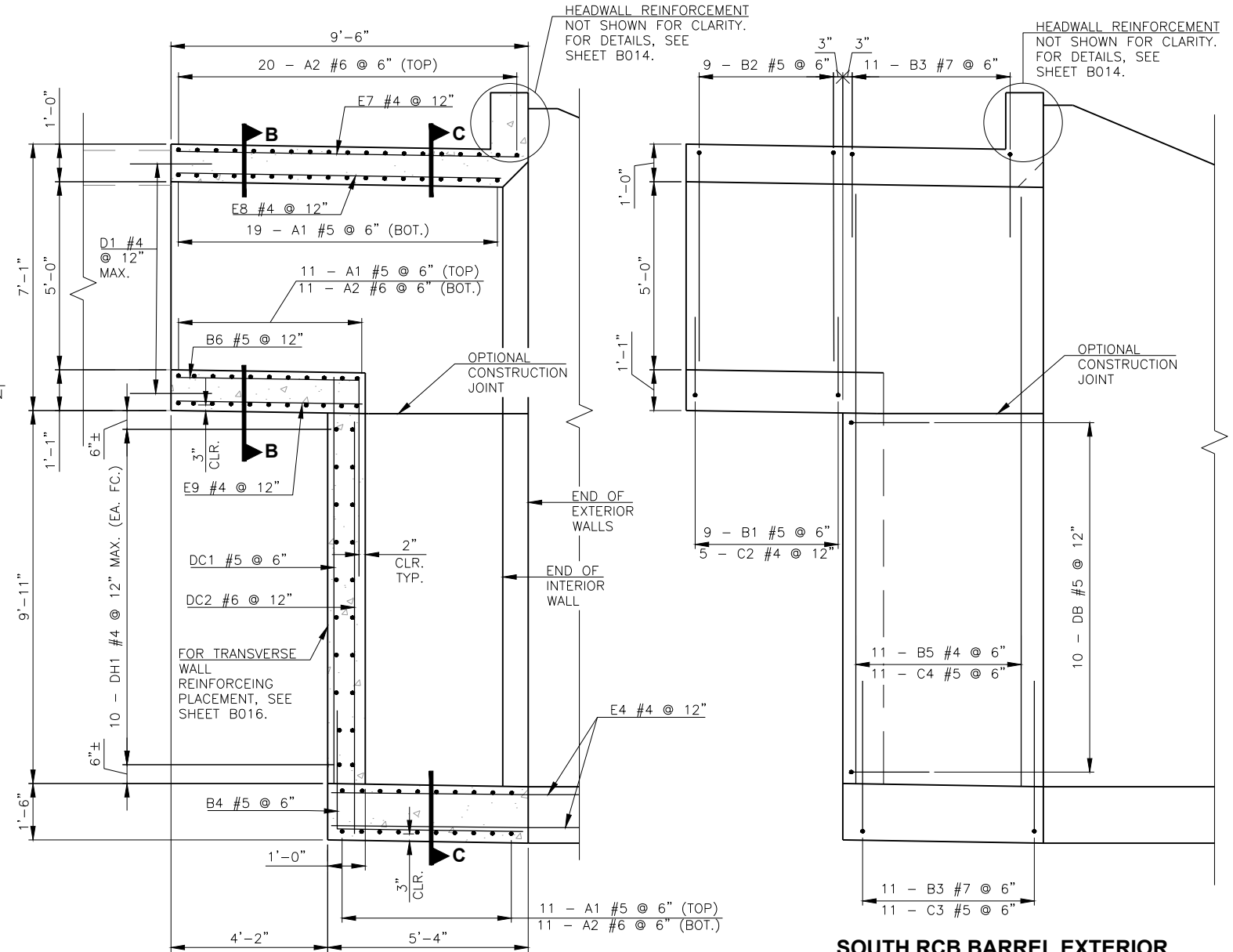


**SECTION B-B**



**SECTION C-C**



**SOUTH RCB BARREL SECTION**

**SOUTH RCB BARREL EXTERIOR WALL ELEVATION**

(TYPICAL HORIZONTAL REINFORCEMENT NOT SHOWN FOR CLARITY)

(A) CONTOUR BOTTOM SLAB TO MATCH EXISTING RCB. ENSURE CLEAR COVER IS MAINTAINED AT ALL LOCATIONS.

**1 SOUTH RCB BARREL AND HEADWALL QUANTITIES**

ITEM	UNIT	TOTAL
UNCLASSIFIED EXCAVATION	C.Y.	1,100
STRUCTURAL EXCAVATION UNCLASSIFIED	C.Y.	50
GRANULAR BACKFILL	C.Y.	50
CLASS AA CONCRETE	C.Y.	39.0
REINFORCING STEEL	LB.	8,820
REMOVAL OF BRIDGE ITEM (TYPE B)	LSUM.	1

1 BARREL QUANTITIES INCLUDE THE QUANTITIES FOR ONE HEADWALL.  
 2 QUANTITY IS ESTIMATED. ACTUAL QUANTITY TO BE DETERMINED IN THE FIELD BY THE ENGINEER.

DESIGN	B.J.K.	TRIBUTARY TO SIMON CREEK	LOVE COUNTY
DRAWN	R.A.P.	<b>SOUTH RCB BARREL DETAILS (SHEET 1 OF 2)</b>	
CHECKED	B.J.K.		
APPROV.	B.J.K.		
SQUAD	CEC		
		JOB PIECE NO. 25447(04)	SHEET NO. B016